

# **Gender Summit 3 – North America**

**Wanda E. Ward, PhD**

**Office of International and Integrative Activities  
November 13, 2013**



# GS3 International Planning Committee



**Isabelle Blain**  
Vice-President Research Grants and Scholarships, Natural Sciences and Engineering Research Council of Canada (NSERC), Canada



**Kelly Mack**  
Vice President for Undergraduate Science Education and Executive Director, Project Kaleidoscope, Association of American Colleges and Universities (AAC&U), USA



**Nancy Cantor**  
Chancellor and President, Syracuse University, USA



**Elizabeth Pollitzer**  
Director, Portia Ltd - genSET, UK



**Janine Austin Clayton M.D.**  
Director, Office of Research on Women's Health (ORWH), National Institutes of Health (NIH), USA



**Betty Shanahan**  
Executive Director & Chief Executive Officer, Society of Women Engineers (SWE), USA

From  
Mexico

**Mary Anne Colin**  
Technical Coordinator and Liaison at the National Council for Science and Technology of Mexico (CONACYT), Mexico



**Joy Johnson**  
Scientific Director of the Institute of Gender and Health (IGH), Canadian Institutes of Health Research (CIHR), Canada



**Wanda E. Ward**  
Head, Office of International and Integrative Activities, National Science Foundation (NSF), USA

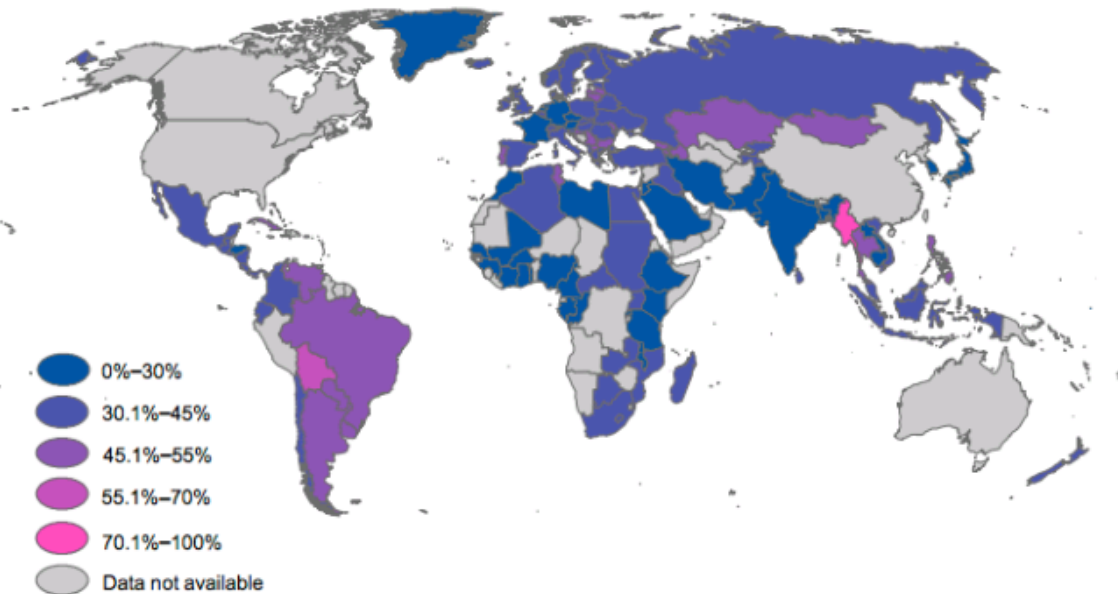


# European Gender Summit in 2012



# The Gender Gap in Science

WOMEN AS A SHARE OF TOTAL RESEARCHERS, 2010 OR LATEST AVAILABLE YEAR



**Note:** Data in this map are based on HC, except for Congo and India (based on FTE).  
**Source:** UNESCO Institute for Statistics, October 2012.

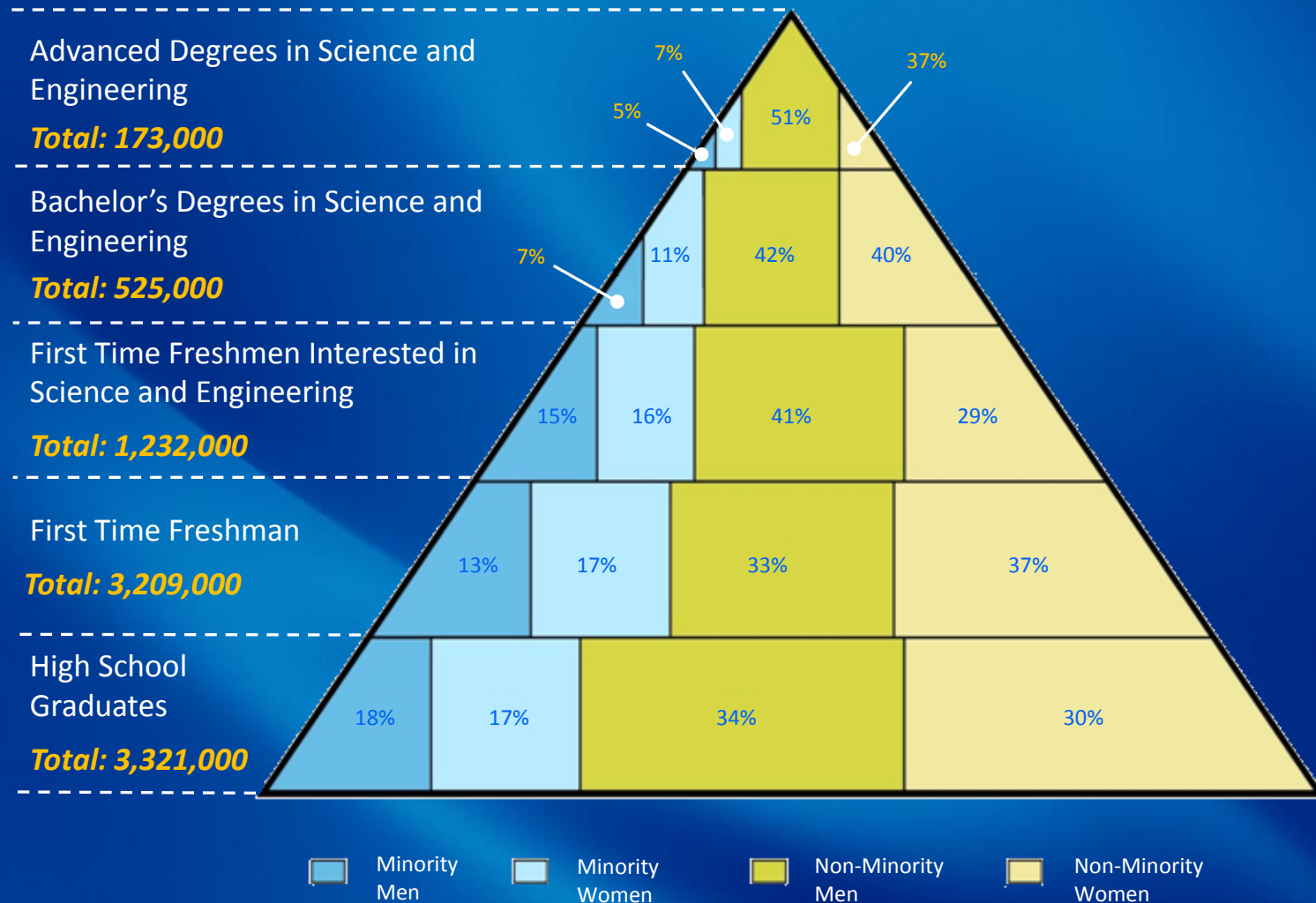
See [A Map of the Gender Gap in Science Around the Globe](#): A portrait from UNESCO shows where women are well represented among employed scientists, and where they are rare.

The map offers confirmation for the conclusion that (surprise) there's no biological explanation for the low numbers of women in science. Concludes [Rebecca J. Rosen](#) in the Atlantic "Cultures vary, and the result is expressed in the map above. We'd do well to look at countries like Argentina and Brazil and see what is helping them achieve their nice purple color."



# Milestones in Higher Education

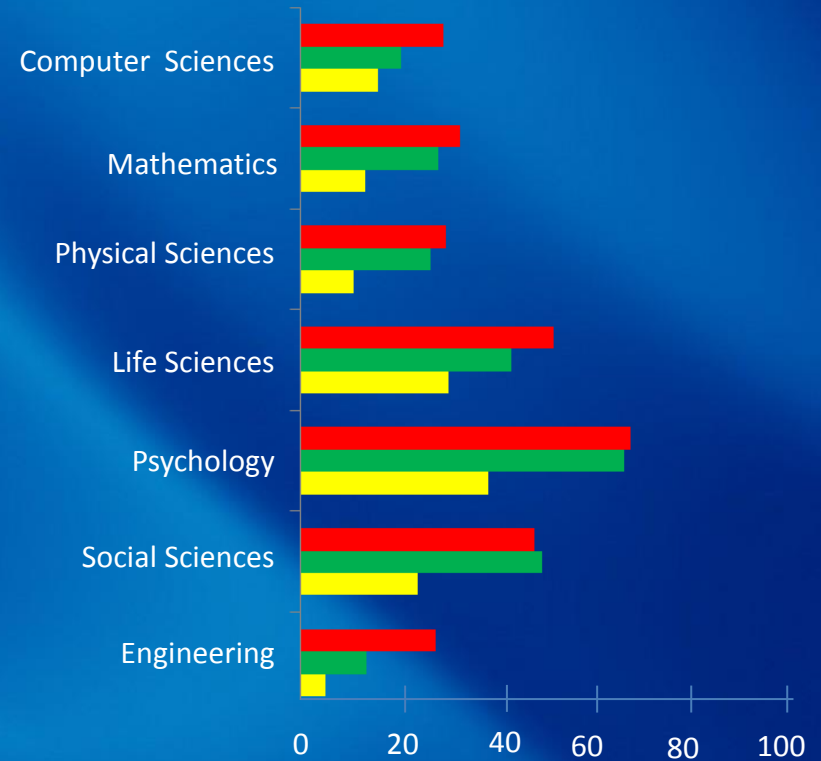
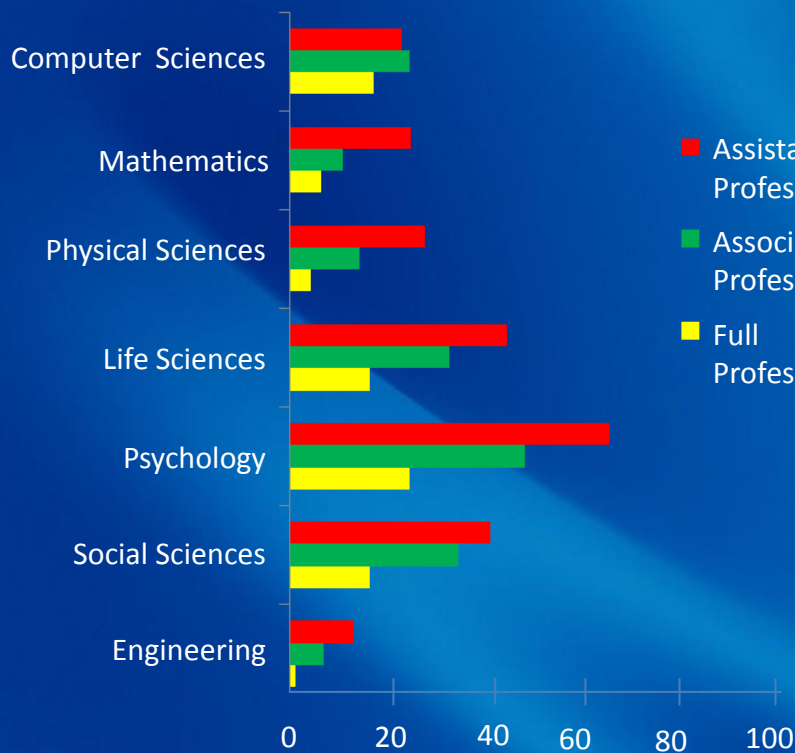
Milestones by Race/Ethnicity and Gender 2010  
(rounded numbers)



Sources: National Center for Education Statistics, IPEDS Completions and Fall enrollment surveys and Common Core of Data; Higher Education Research Institute, American Freshman Survey; and U.S. Census Bureau, Current Population Survey.



# Female percentage of full-time science and engineering faculty at 4-year colleges or universities, by rank and field of doctorate: 1997 and 2008



Source: National Science Foundation, Survey of Doctorate Recipients





Gender  
Summit **3**  
North America

2013

*Diversity Fueling Excellence in  
Research and Innovation*

**November 13-15, 2013**

Washington Hilton | Washington, DC, USA



# Diversity Fueling Excellence in Research and Innovation



- More than 130 speakers
- More than 30 posters and exhibits
- More than 600 attendees
- More than 35 countries represented



# Gender Summit 3 - North America

## Diversity Fueling Excellence in Research and Innovation



November 13 - 15, 2013, Washington D.C.

[www.gender-summit.com](http://www.gender-summit.com)



The aim of the 3rd Gender Summit, which is focused on North America, is to interconnect all relevant stakeholders in a Call to Action to achieve positive change towards greater diversity in the Science, Engineering, Technology and Mathematics (STEM) workforce and leadership, and greater inclusion of sex and gender considerations (the "gender dimension") in research content and process.

### BACKGROUND



Established in 2011, the Gender Summit has become the foremost forum for engaging top-level researchers, policy makers, science and innovation leaders, and other actors and stakeholders in STEM, to address gender issues in research and innovation where they impact on efficacy, quality and success of these sectors.

### GOALS



- Develop a collective commitment to strengthen human capital development, research and innovation through diversity
- Demonstrate latest evidence of how incorporating sex and gender consideration into STEM research and innovation contribute to excellence
- Expand and transform the Gender Summit into a global level forum for collaborative dialogue and activities focused on shaping science and society through the inclusion of gender dimension in research, innovation, and markets for science knowledge.



### OBJECTIVES



- Develop solutions on how to incorporate sex and gender considerations in research methods, institutional structures, funding structures and peer review processes
- Foster an inclusive community of experts -- cross-disciplinary, government, industry, academic, and citizen partnerships -- to address scientific and societal grand challenges
- Maximize national and international capacity to address societal challenges and create transformational opportunities through research and innovation that is appropriately responsive to the needs of both women and men.
- Create an implementation Roadmap for evidence-based, concerted and integrated action by all stakeholders engaged in STEM.



### The Summit will address the following questions:



What is the compelling research evidence that demands immediate response?

What mechanisms are needed to strengthen inter-stakeholder collaboration?

What are the most appropriate, beneficial and impactful actions that different stakeholders can take?

What strategy is best to achieve global impact?

The Gender Summit was established in Europe in 2011. In 2013, for the first time, the event expands to North America with the National Science Foundation as lead partner.

Partners:



National Science Foundation



Natural Sciences and Engineering Research Council of Canada



National Council for Science and Technology



National Institutes of Health



Canadian Institutes of Health Research



Portia Ltd UK  
in association with



European Commission

For more details:

In USA: NSF, [gendersummit@nsf.gov](mailto:gendersummit@nsf.gov), [www.nsf.gov/od/ia/activities/gendersummit](http://www.nsf.gov/od/ia/activities/gendersummit)  
In Canada: NSERC, [gendersummit@nserc-crsng.gc.ca](mailto:gendersummit@nserc-crsng.gc.ca), (CA) +1 613 995-5521, [www.nserc-crsng.gc.ca](http://www.nserc-crsng.gc.ca)  
In Mexico: CONACYT, [cumbredegenero@conacyt.mx](mailto:cumbredegenero@conacyt.mx), (Mex) +(52 55) 53 22 77 00 Ext. 1710, [www.conacyt.mx](http://www.conacyt.mx)  
In Europe: Portia Ltd, [summit@portiaweb.org.uk](http://summit@portiaweb.org.uk), (UK) +44 207 267-5348, [www.portiaweb.org.uk/index.php/gender-summit](http://www.portiaweb.org.uk/index.php/gender-summit)



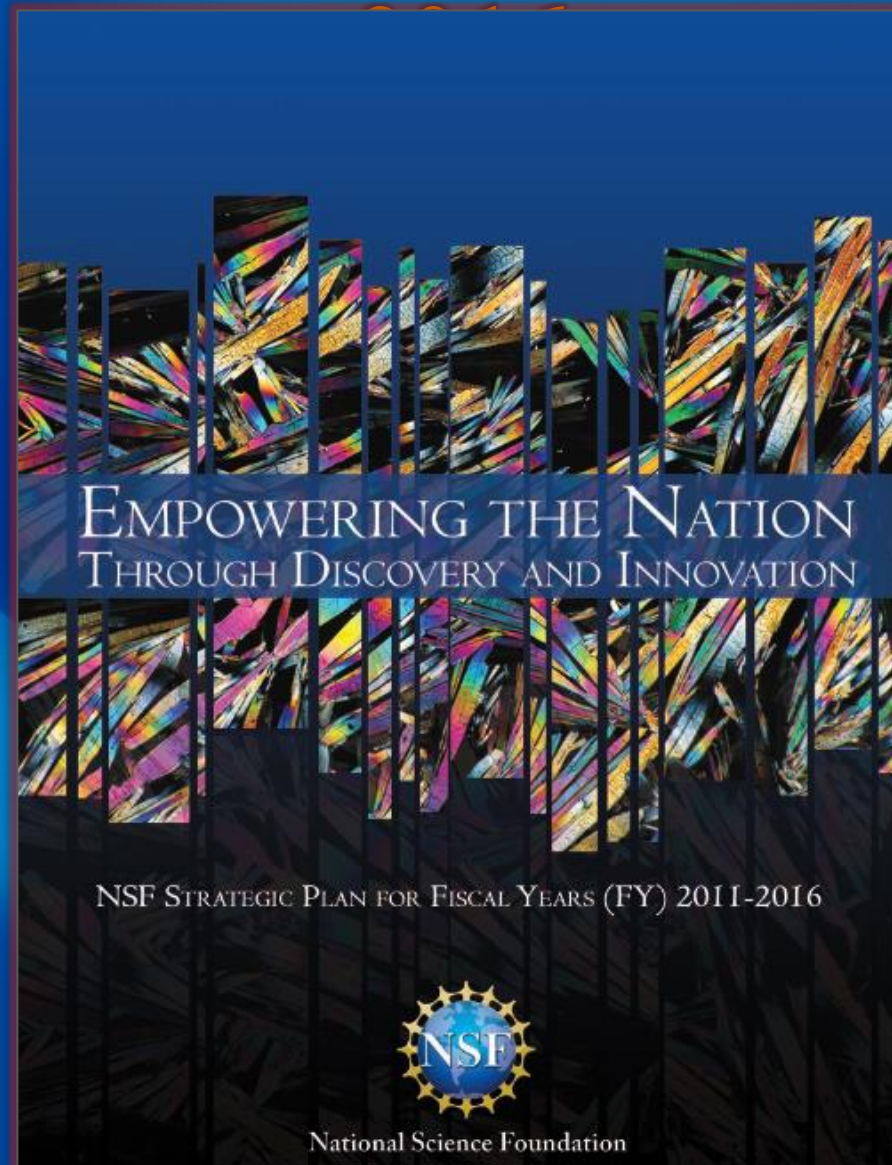
## SUMMIT LOGISTICS

### Summit-at-a-Glance

Pre-Summit: Tuesday, November 12, 2013		
4:00PM – 7:00PM	Registration Desk Open	Terrace Foyer
Day 1: Wednesday, November 13, 2013		
8:00AM – 9:00AM	Registration Desk Open	Terrace Foyer
9:00AM – 9:15AM	Welcome	International Ballroom
9:15 AM – 9:30 AM	Video Addresses from European Leaders	International Ballroom
9:30AM – 10:00AM	Keynote Address	International Ballroom
10:00AM – 11:30AM	Plenary Panel: Development of a Collective Commitment to Strengthen Human Capital Development, Research, and Innovation Through Diversity	International Ballroom
11:30AM – 12:00PM	Break	
12:00PM – 1:30PM	Plenary Panel: Development of Joint Policies for Innovation and Partnership in STEM Higher Education as a Means of Widening Access to Knowledge	Crystal Corridor Ballroom
1:30PM – 2:45PM	Keynote Address and Lunch	International Ballroom
2:45PM – 4:45PM	Plenary Panel: Evidence of How Incorporating Sex and Gender Consideration into STEM Research and Innovation Informs Policy	Crystal Corridor Ballroom
4:45PM – 5:00PM	Break	
5:00PM – 5:30PM	Evening Keynote Address	Terrace West
5:30PM – 7:00PM	Evening Reception: Networking & Posters	Terrace West
Day 2: Thursday, November 14, 2013		
8:00AM – 5:30PM	Registration Desk Open	Crystal Corridor
8:00AM – 8:30AM	Keynote Address	International Ballroom
8:30AM – 9:45AM	Plenary Panel: Harnessing the Gender Dimension to Address Global Scientific and Societal Challenges	International Ballroom
9:45AM – 10:00AM	Break	
10:00AM – 11:15AM	Parallel Sessions: Stream 1 – Diversity in Participation	Breakout Rooms
11:15AM – 12:30PM	Keynote Address and Lunch	International Ballroom
12:30PM – 1:00PM	Break & Poster Exhibition	
1:00PM – 2:30PM	Parallel Roadmap Development Sessions	Breakout Rooms
2:30PM – 3:00PM	Break	
3:00PM – 5:00PM	Plenary Session: Gender Roadmap for Research and Innovation Systems: Addressing the Needs of Different Stakeholders	Crystal Corridor
Day 3: Friday, November 15, 2013		
8:00AM – 2:30PM	Registration Desk Open	Crystal Corridor
9:00AM – 10:30AM	Parallel Sessions: Stream 2 – The Gender Dimension in the Research Continuum	Breakout Rooms
10:30AM – 11:00AM	Break	
11:00AM – 12:30PM	Parallel Sessions: Best Practice Training Workshops	Breakout Rooms
12:30PM – 1:30PM	Working Lunch	International Ballroom

For more information go to [www.gendersummit.com](http://www.gendersummit.com) and visit the online community at [www.gender-summit2013.pathable.com/](http://www.gender-summit2013.pathable.com/)

# NSF Strategic Plan for Fiscal Year 2011-





# Representative NSF Portfolio

**International and Integrative Activities**

**Biological Sciences**

**Computer & Information Science & Engineering**

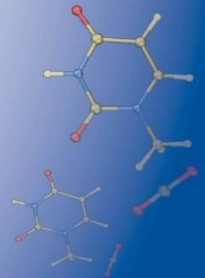
**Education & Human Resources**

**Engineering**

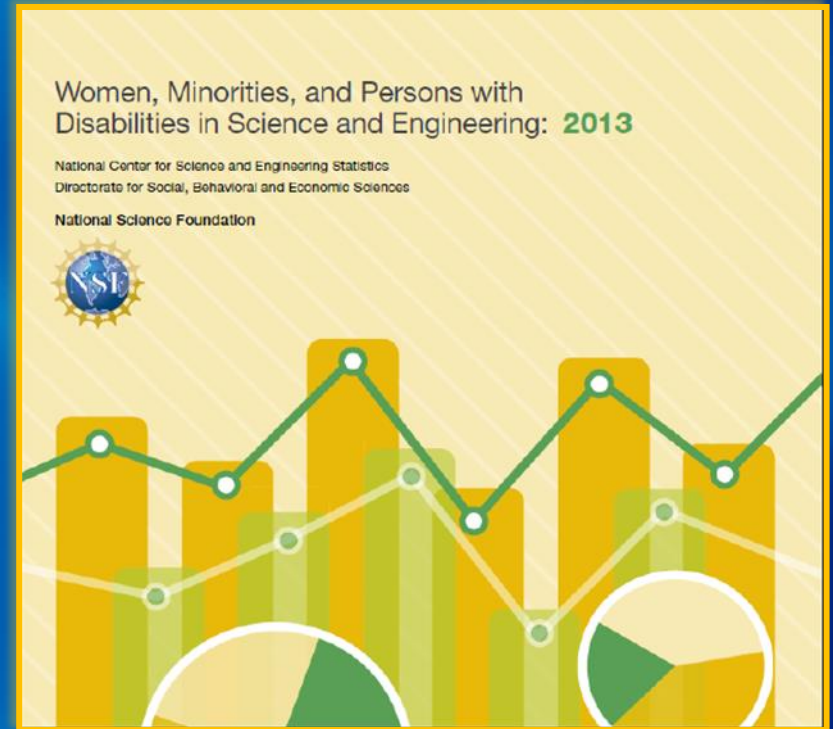
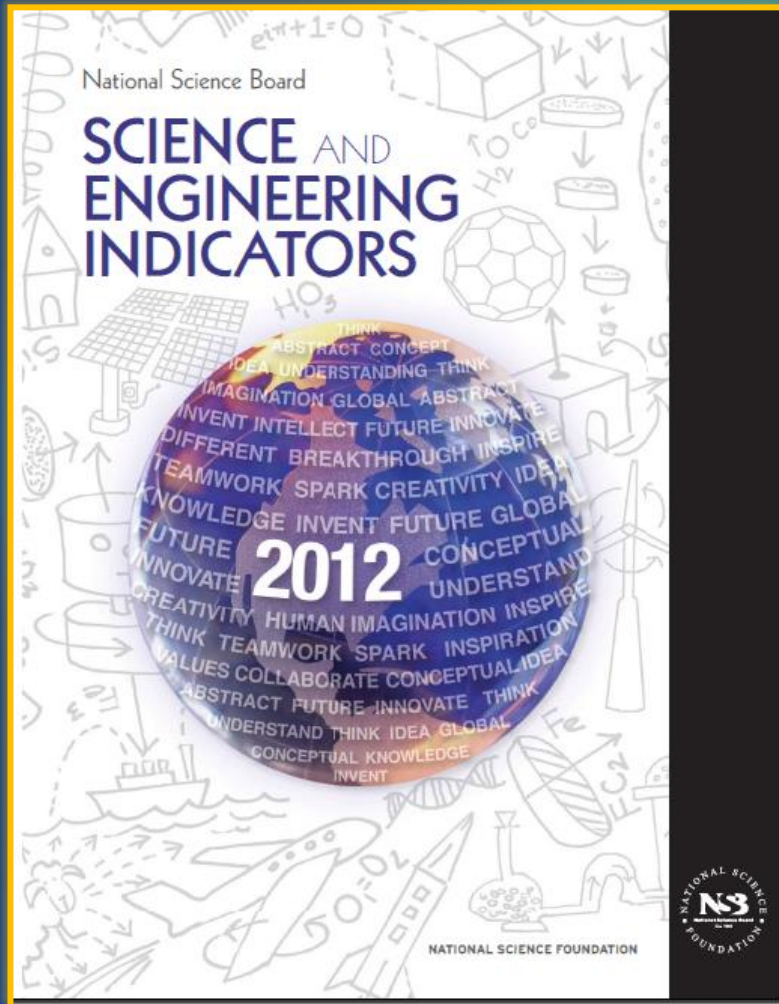
**Geosciences**

**Mathematics & Physical Sciences**

**Social, Behavioral & Economic Sciences**



# Recent Reports





31% of heads of higher education institutions and 22% of board members in research centers, universities and research institutes are women.

European Commission

...the Commission has also been... science and technology systems is a waste... women in science and engineering careers... research centers, universities and research institutes are women... the Commission has also been... science and technology systems is a waste... women in science and engineering careers... research centers, universities and research institutes are women... the Commission has also been... science and technology systems is a waste... women in science and engineering careers... research centers, universities and research institutes are women...

## Structural change in research institutions: Enhancing excellence, gender equality and efficiency in research and innovation

# ADVANCE

for the advancement of women in science and engineering careers



<http://www.portal.advance.vt.edu/>



Women and  
Research



# The White House and National Science Foundation Announce New Workplace Flexibility Policies to Support America's Scientists and Their Families



*First Lady Michelle Obama speaking at the White House in connection with the launch of the initiative. Official White House photo.*

First Lady Michelle Obama spoke at a White House event about the importance of supporting and retaining women and girls in STEM careers. At this East Room event, the NSF launched the Career-Life-Balance Initiative.



- Research on Gender
- Gendered Innovations
- Gender Diversity in STEM
- Gender Neutral/Sensitive Policies
- Gender Considerations for Scientific Efficiency and Impact





# Gender-Focused Multi-National Collaboration(s)





# Examples

- STEM Frontier Gendered Research
  - Interdisciplinary and International Perspectives
- Capabilities for Virtual STEM Global Engagement of Young Girls and Female Researchers
  - Networking inclusive vertical and horizontal communities



# **Development of a Collective Commitment to Strengthen Human Capital Development, Research and Innovation Through Diversity**

- European Commission (EC)
  - Dominique Ristori
- Natural Sciences and Engineering Research Council of Canada (NSERC-CRSNG)
  - Isabella Blain
- The National Council on Science & Technology
  - Julia Tagüeña

